

BestDT* SonicVision Processing

Run 4 : 2775m - 3565m (1/500)

* A Mark of Schlumberger

Using the following logs: sonicVision

COMPANY: Beach Petroleum
WELL: Fermat-1
FIELD: Fermat
Rig: West Triton
STATE: VIC
COUNTRY: Australia
Date Logged: 08-Jan-2009
Well Location: Otway Basin

Date Processed: 08-Jan-2009

Elevations: KB: 38m

GL: -38.7m

FOLD HERE The well name, location and borehole reference data were furnished by the customer.

All interpretations are opinions based on inferences from electrical or other measurements and we cannot, and do not guarantee the accuracy or correctness of any interpretation, and we shall not, except in the case of gross or willful negligence on our part, be liable or responsible for any loss, costs, damages or expenses incurred or sustained by anyone resulting from any interpretations made by any of our officers, agents or employees. These interpretations are also subject to Clause 4 of our General Terms and Conditions as set out in our current Price Schedule.

Field Recording:	Location:	Software Version: 13X0-101	Engineer: Joshua S
Office Recording:	ICS Center: Melbourne	Baseline: GF 4.4 DC3	Log Analyst: A. Datey

Mud and Borehole Measurements:		
Rm @ Measured Temperature: 0.1142ohm.m @ 24.3degC	BHT:	Bitsize: 8.5in
Rmf @ Measured Temperature:0.0884ohm.m @ 24.3degC	Type Fluid in Hole:	WBM
Rmc @ Measured Temperature:0.1356ohm.m @ 24.1degC	Mud Density: 10.7 ppg	

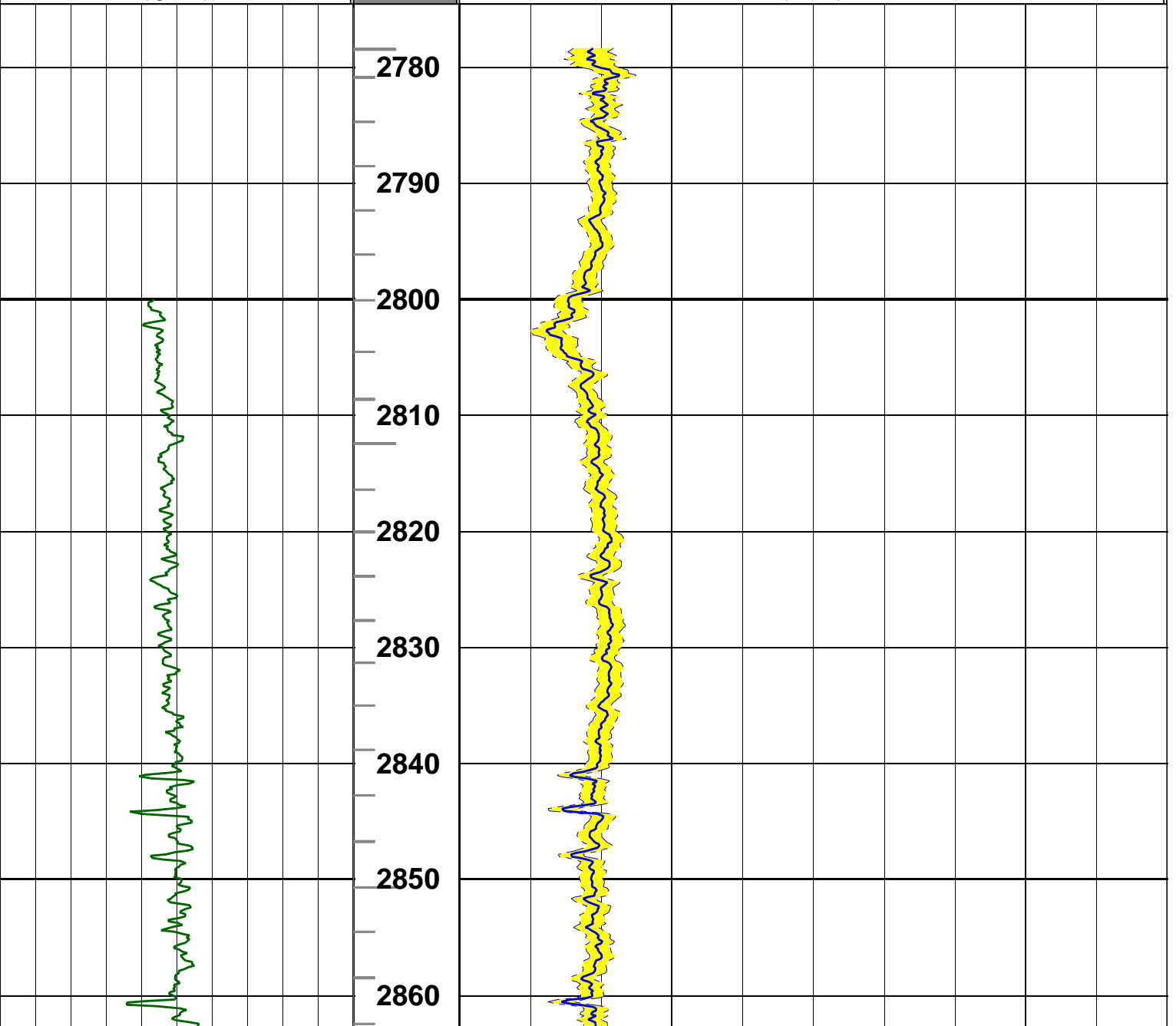
Remarks:
sonicVision6 run in hole drilled with bit size of 8.5"
The overall data quality is very good.
See the bottom of the QC log for processing parameters.

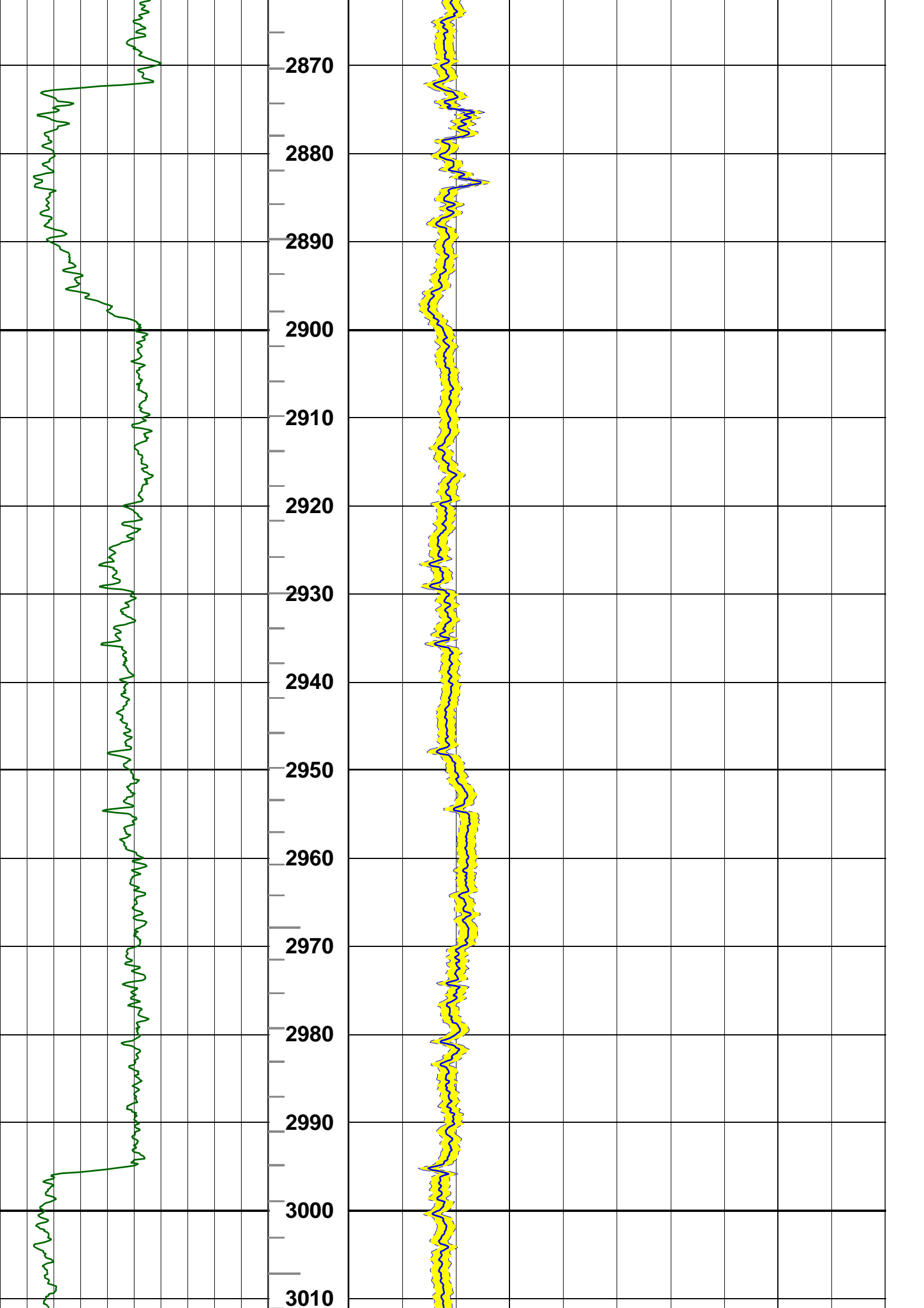
ITT PIPS - Small:1ms ; Large:10ms

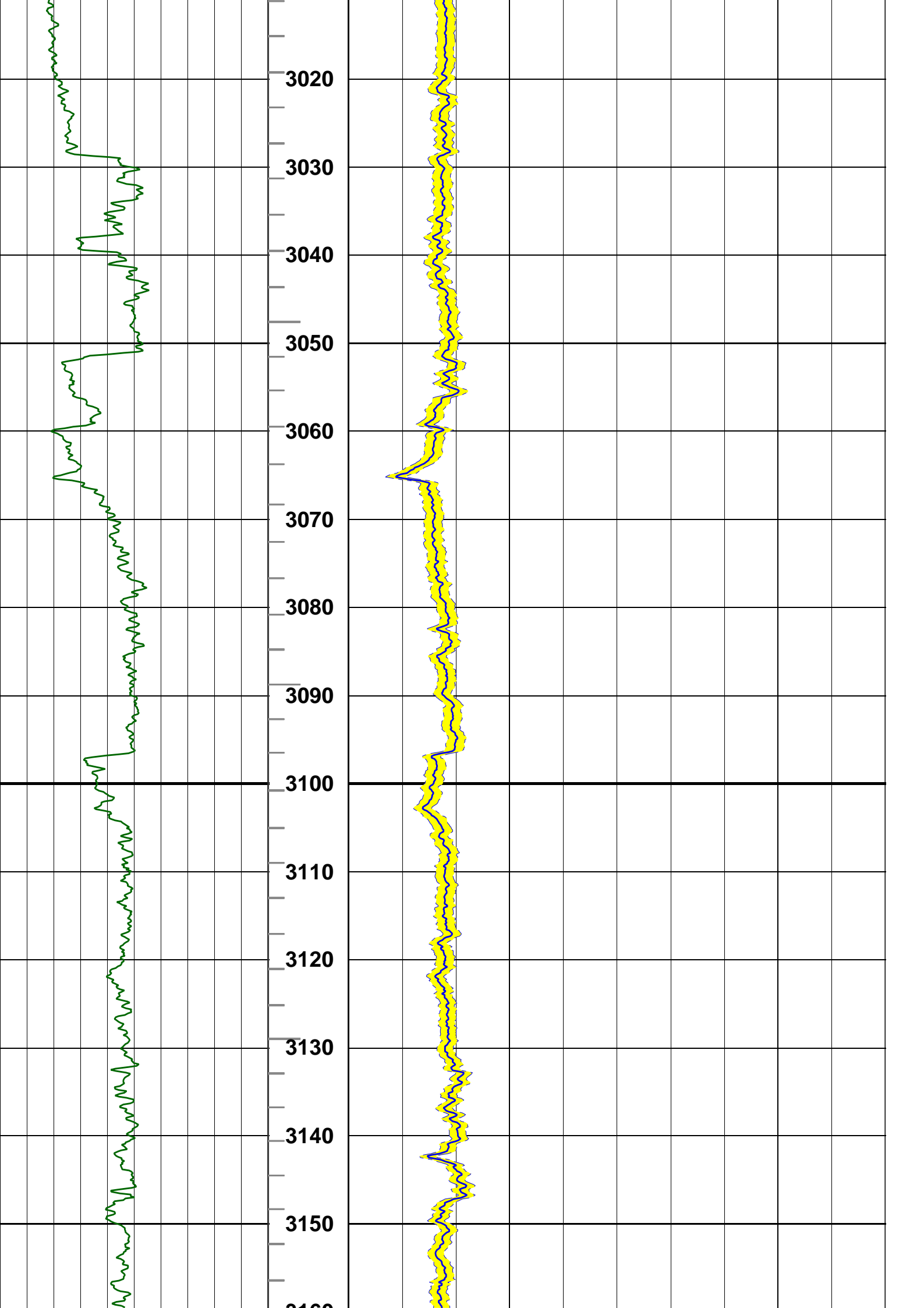
MD
1 : 500
m
PIPS
0 () 5

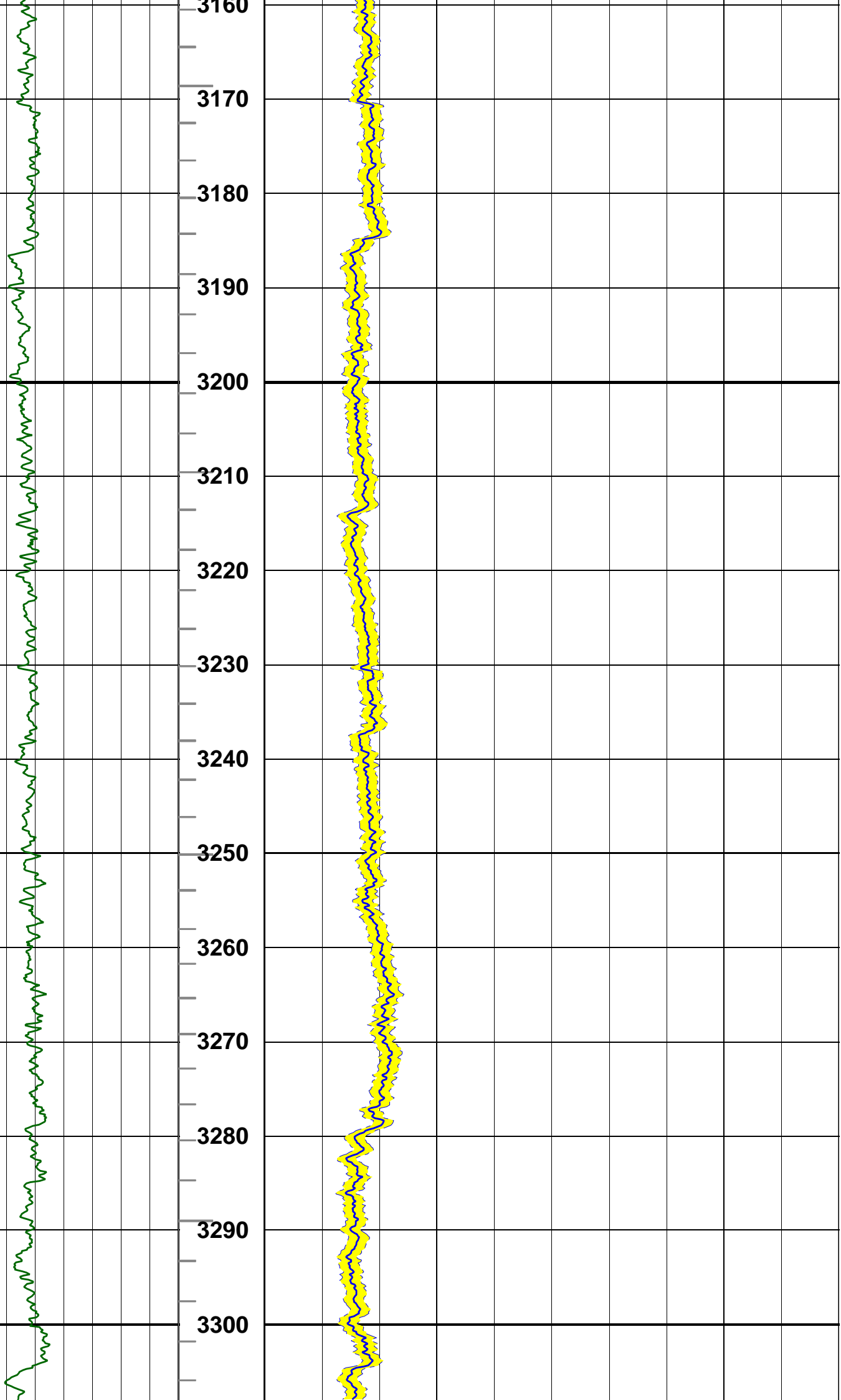
Gamma Ray
0 (gAPI) 200

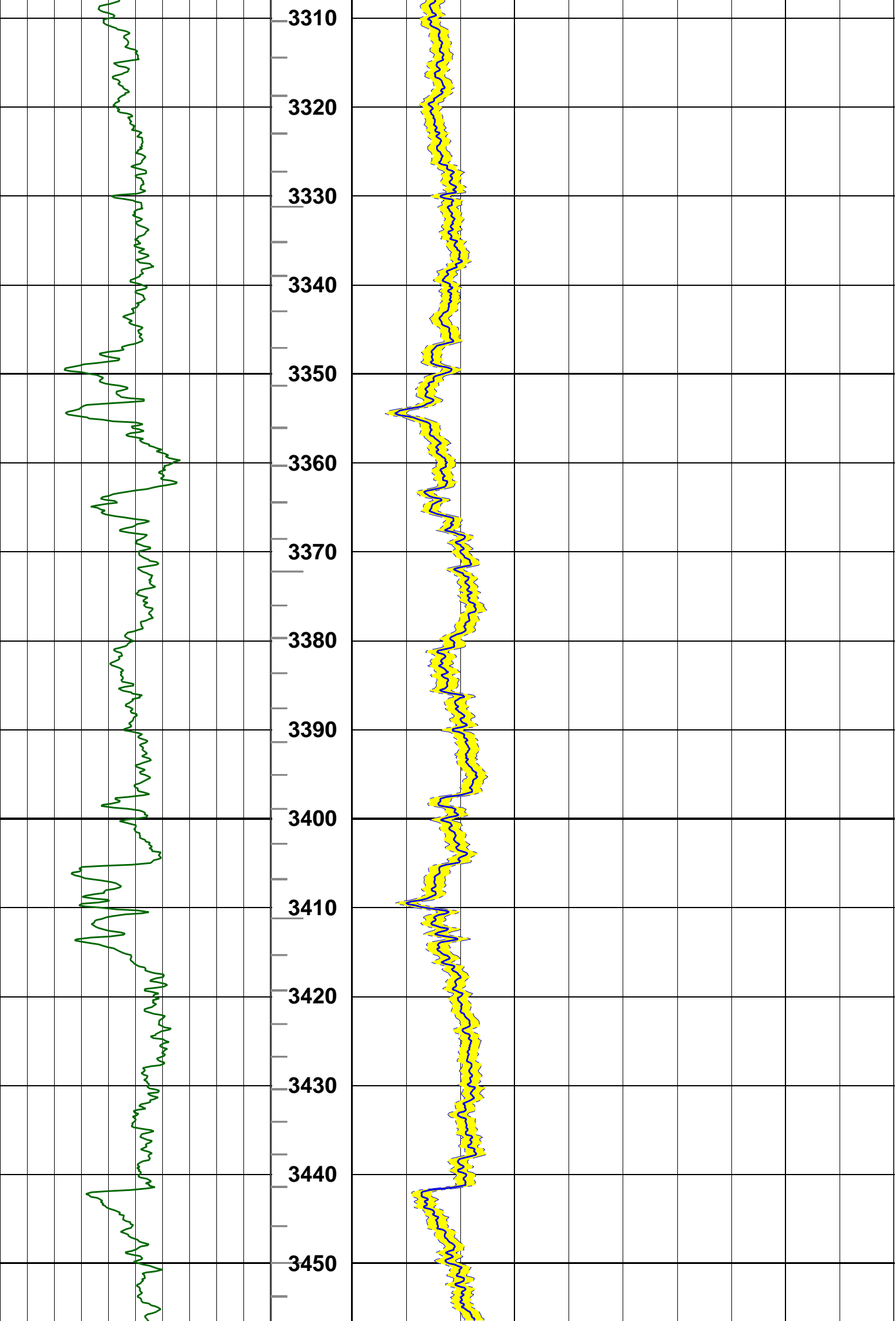
ITT
Compressional Delta-T (DTCO)
40 (us/ft) 240

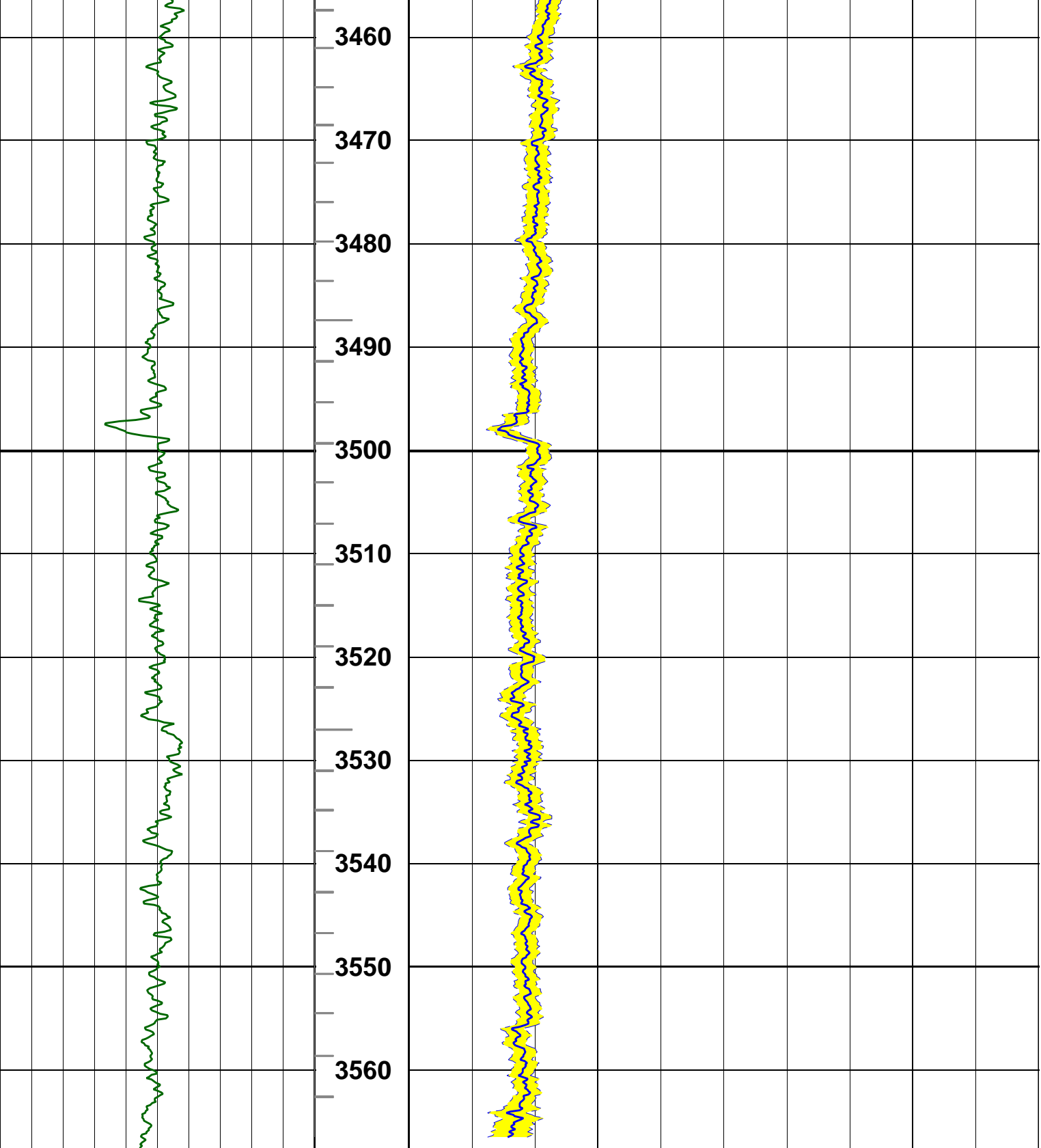












--- Finalization Result ---
 1 MPS Compressional Receiver Absent levels= 25
 1 MPS Compressional Transmitter Absent levels= 18
 1 MPS Shear Receiver Absent levels= 5177

Gamma Ray (gAPI) 0 200 ITT 40 240 Compressional Delta-T (DTCO) (us/ft)

PIPS
 0 () 5
MD
1 : 500
m

Monopole Compressional Processing QC

WF VDL		
400	(us)	3378
TICS		
400	(us)	3378
TISS		
400	(us)	3378

TIVflag

MD
1 : 500
m

Gamma Ray
0 (gAPI) 200

SpcRC
0 (Hz) 40000

SpcRS
-20000 (Hz) 20000

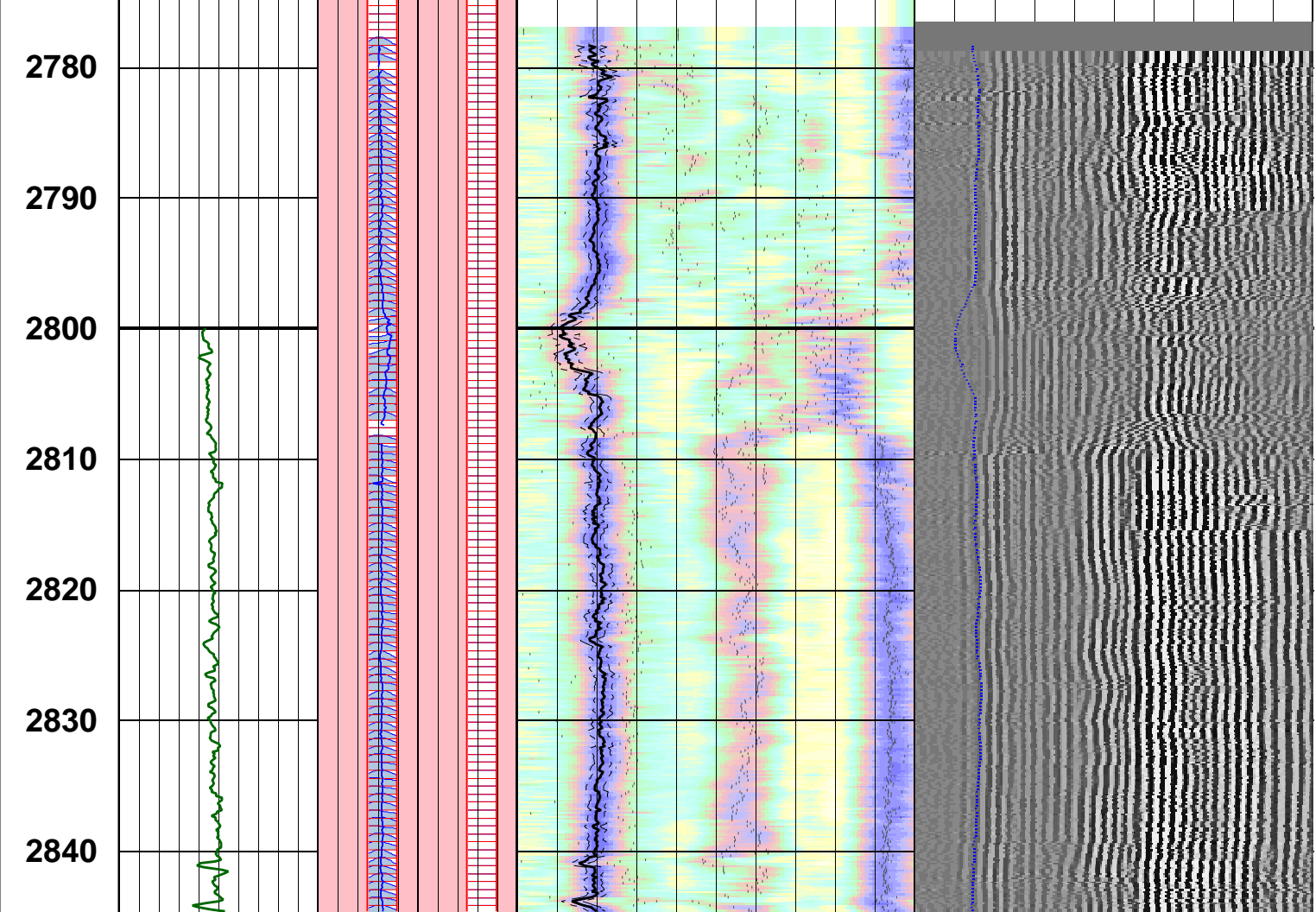
CfRC
0 (Hz) 40000

CfRS
-20000 (Hz) 20000

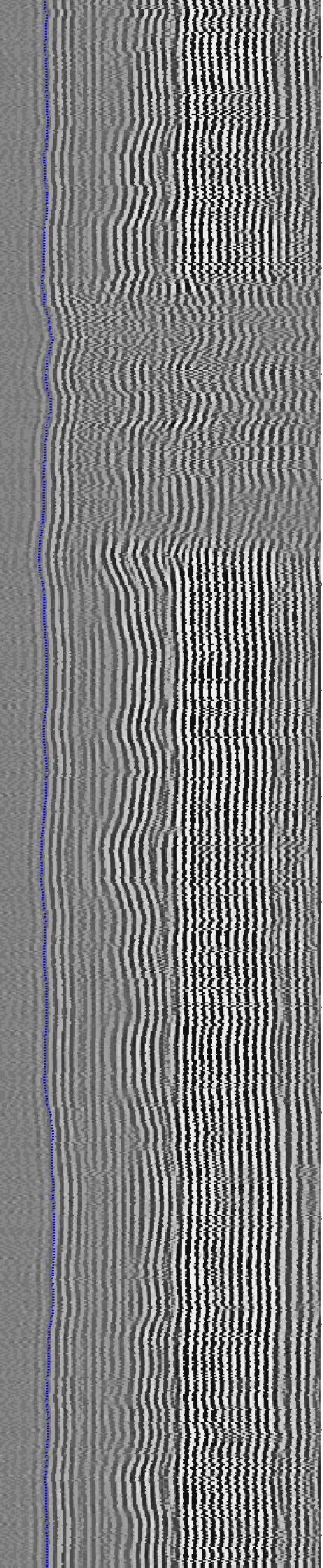
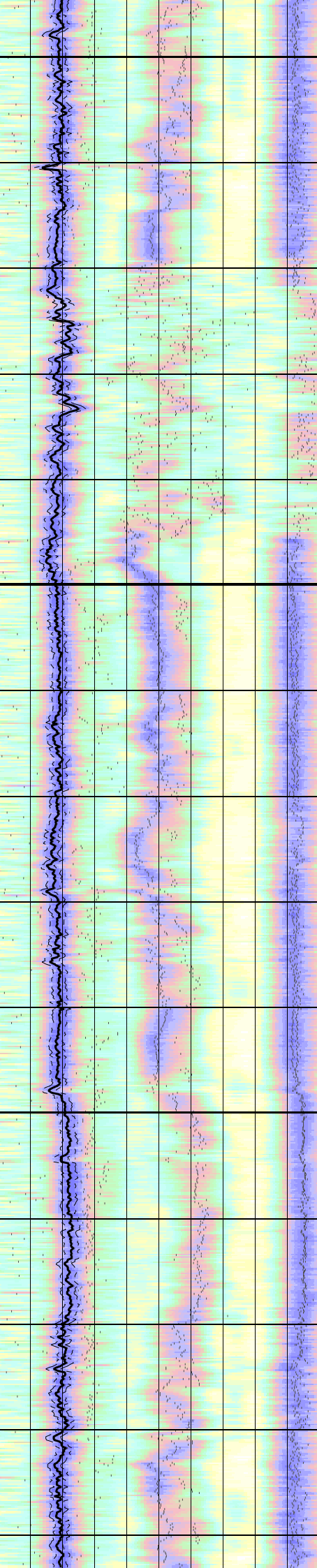
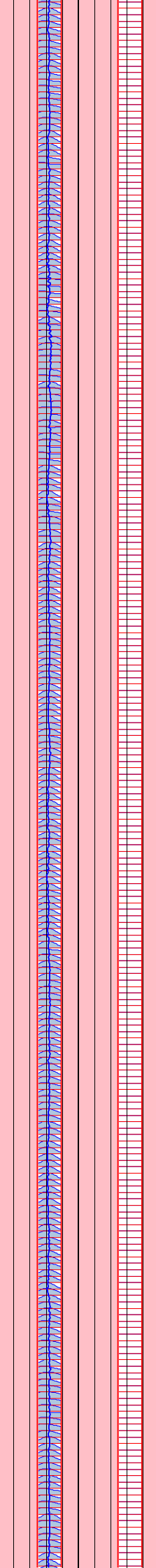
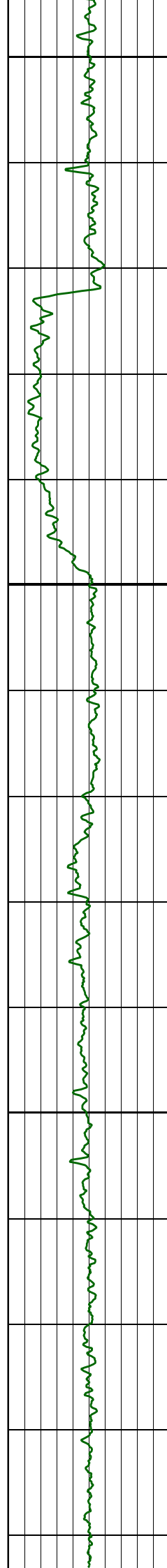
STPrjR
39 (us/ft) 240

DtRC
39 (us/ft) 240

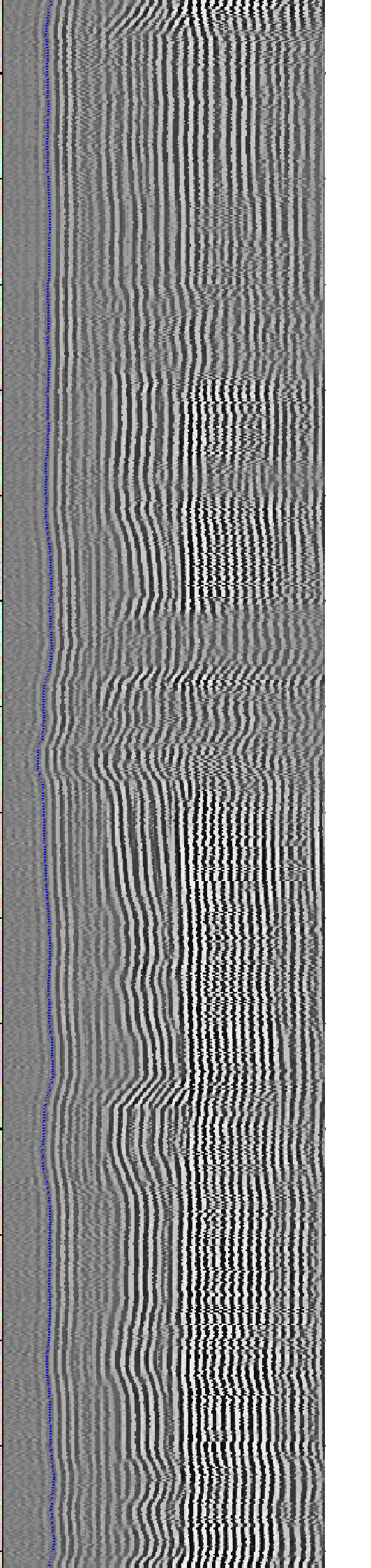
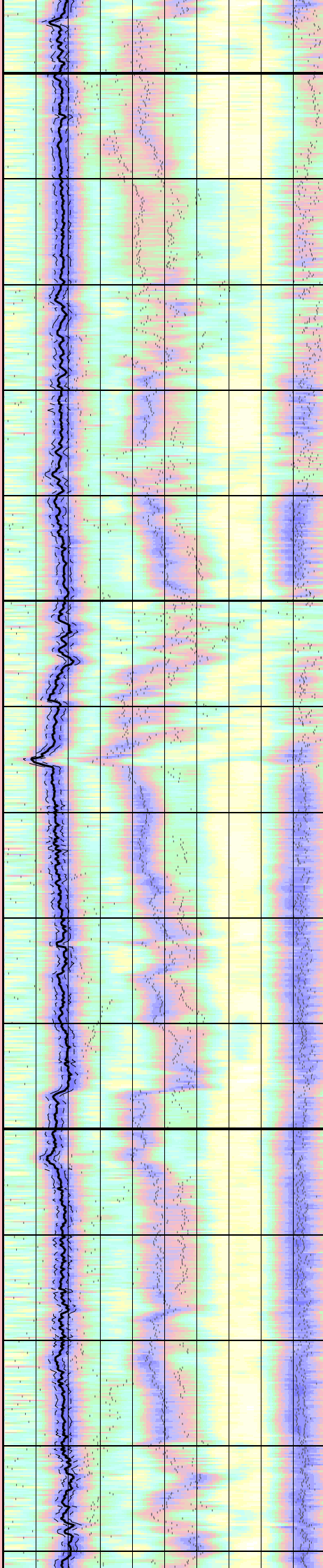
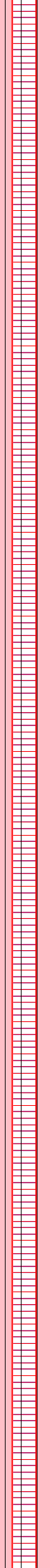
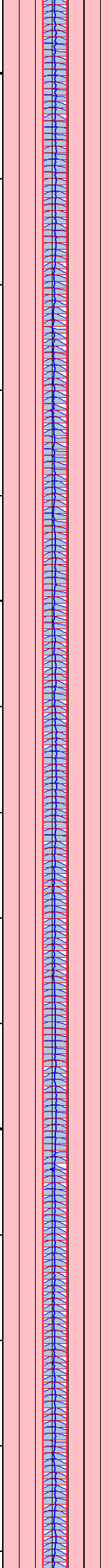
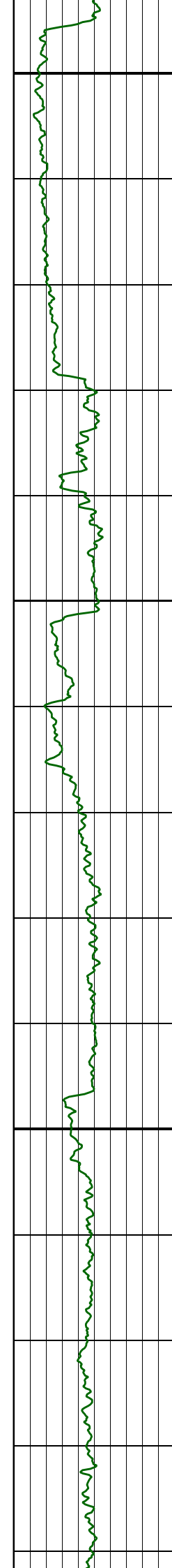
DtRS
39 (us/ft) 240



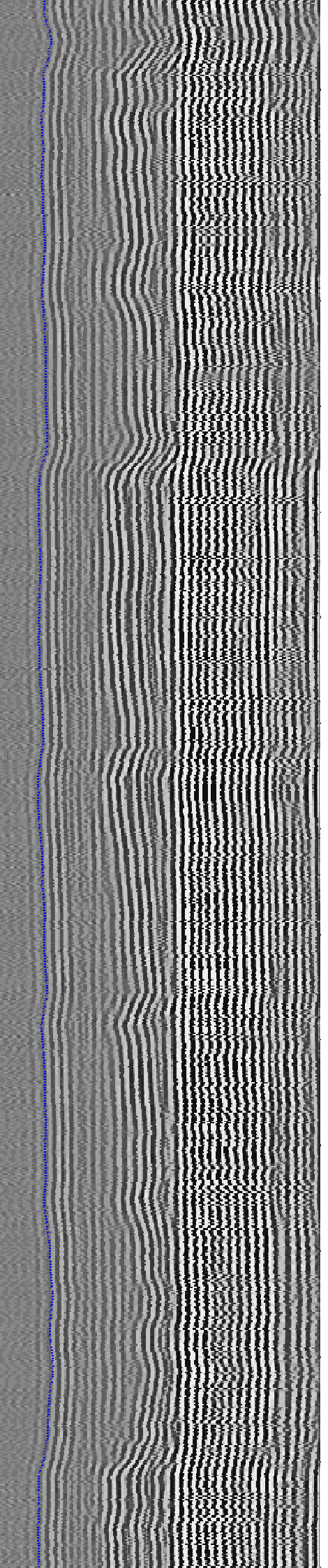
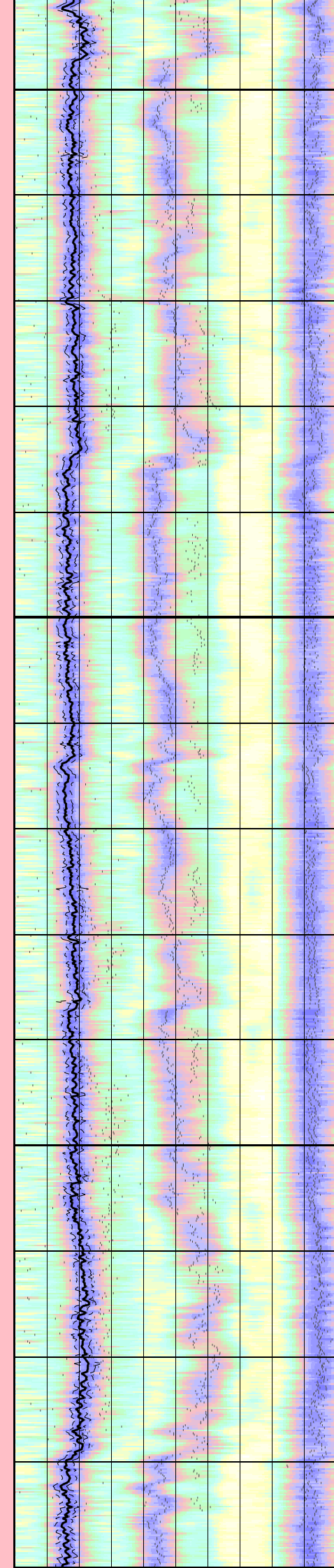
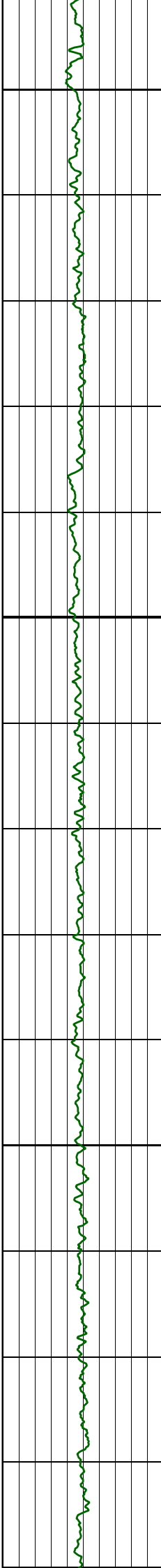
2850
2860
2870
2880
2890
2900
2910
2920
2930
2940
2950
2960
2970
2980
2990

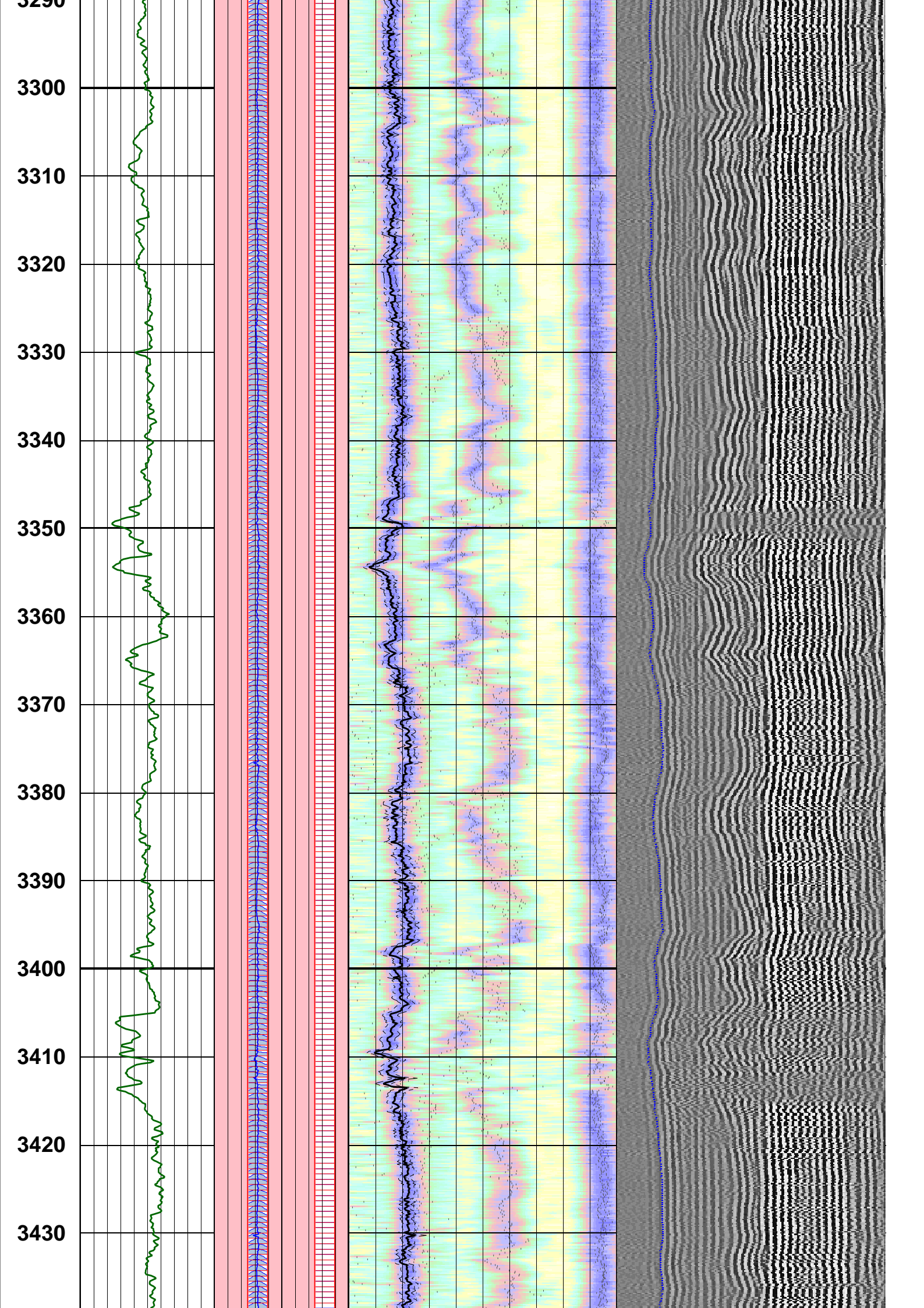


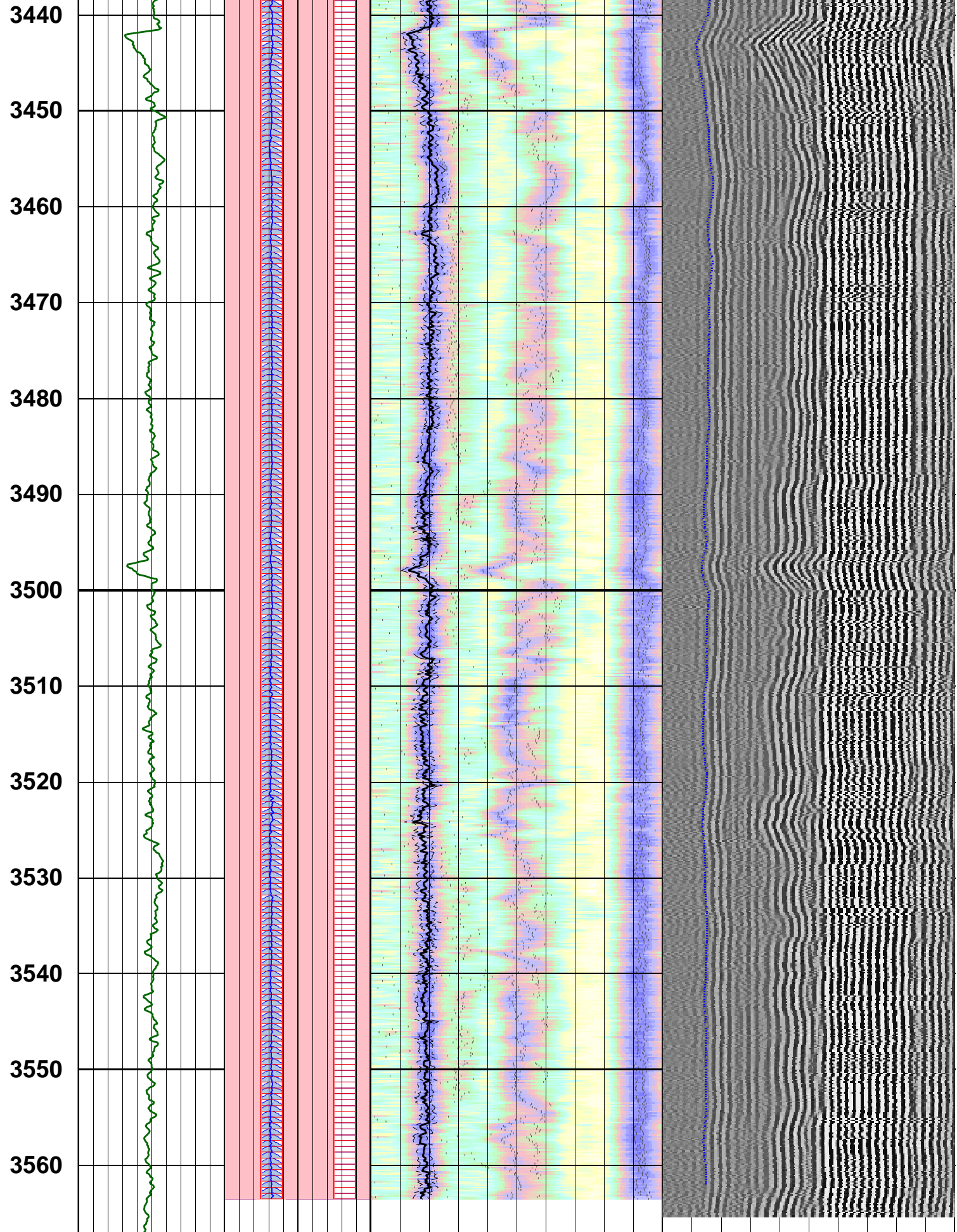
3000
3010
3020
3030
3040
3050
3060
3070
3080
3090
3100
3110
3120
3130
3140



3150
3160
3170
3180
3190
3200
3210
3220
3230
3240
3250
3260
3270
3280
3290







Customized Process: Start Depth (3566.52 m), Stop Depth (2774.7 m), Logging Mode (sonicVISION - MPS_WIDE)
 Noise Cut Filtering(No), Casing Cut Filtering(No)
 WF_FLG(1 1 1 1), MUD_TYPE(WBM), STCAL(Full Array)
 TRSPAC(3.00228), RRSAPAC(0 0.2032 0.4064 0.6096)
 Mud Slowness (no input)
 Hole Diameter (no input)
 Zoning Guide (DTBC@ARC5_MWD_LWD_071SDP;1 (2774.59 - 3563.57 m))
 Tracking Guide (no input)

--- Zone Top Depth (0), Zone Name (Zone1) ---

SFTY(Intermediate), BHS(OPEN), CSIZ(7), HDM(Fix*), HD(8.5), DTMUD(200)

TWI(238.281), SLL(39.7135), SUL(240.267), SST(1.98568), TLL(400), TUL(3219.66), TST(39.7135)

SBW(1120), SBO(160), SWD(20), TWD(840), SEM(0.45), FLENG(63), FLOW(10000), FHIGH(16000)

TKO_MODEL_ORDER(2), TKO_TOL(50) TKO_FLOW(0), TKO_FHIGH(12000)

MD 1 : 500 m				
	<div style="background-color: #00a0a0; color: white; padding: 2px; text-align: center;">TIVflag</div>			

Company: Beach Petroleum Ltd.
 Well: Fermat-1
 FIELD: Fermat
 Rig: West Triton
 STATE: VIC

